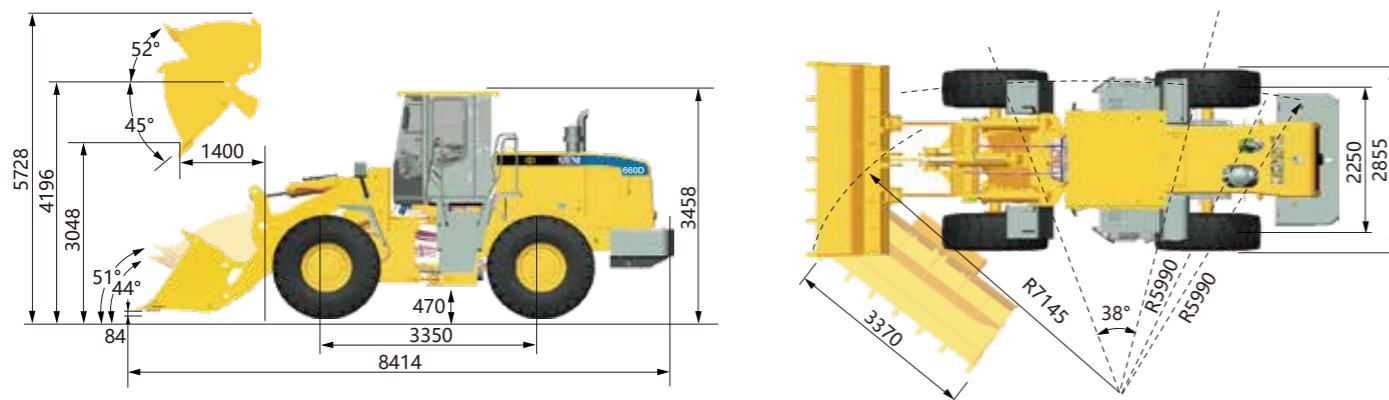


## Main Specifications

| Main Specifications                   |                          | Axle, Tire & Brakes             |                                   |
|---------------------------------------|--------------------------|---------------------------------|-----------------------------------|
| Rated Load (kg)                       | 6,000                    | Rear - Oscillating +/- (°)      | ±11                               |
| Operating Weight with Std Bucket (kg) | 20,300                   | Tire Size, Type & Texture       | 23.5-25 PR20 Bias                 |
| Bucket Capacities (m³)                | 3.5-5.5                  | Service Brake                   | Dry & Caliper, Air to Oil Control |
| Breakout Force (kN)                   | 197                      | Parking Brake                   | Drum Type Shoe Brake              |
| Max. Drawbar Pull Force (kN)          | 194                      | Engine                          |                                   |
| Service Refill Capacities             |                          | Engine Model                    | WD10G240                          |
| Fuel Tank (L)                         | 252                      | Emission                        | T2/ Stage2                        |
| Hydraulic Tank (L)                    | 165                      | Rated Speed (r/min)             | 2,000                             |
| Engine Lubricating Oil (L)            | 21                       | Rated Gross Power (kW)          | 178                               |
| Transmission Oil (L)                  | 53                       | Displacement (L)                | 9.7                               |
| Transmission                          |                          | Implement Hydraulic System      |                                   |
| Maker & Type                          | Tr200                    | Implement Hydraulic System Type | Single Load Sensing               |
| Transmission Gear                     | F4/R4                    |                                 | Flow Sharing System               |
| Torque Converter Type                 | Single Stage, 3 Elements | Hydraulic Cycle Time (s)        | 9.7                               |
| Max Speed (km/hr)                     | 39                       | Raise (s)                       | 5.3                               |
|                                       |                          | System Pressure (MPa)           | 18                                |

## Optional Features

|                |                  |                     |
|----------------|------------------|---------------------|
| High Lift Arm  | Side Dump Bucket | 3 Spool             |
| U Arm          | QC               | Radial Tire         |
| Sand Type Tire | Pallet Fork      | Oil Bath Air Filter |
| GP Bucket      | Log Gripper      | Brake Air Drier     |
| Rock Bucket    | Pipe Gripper     | 26.5-25 Tire        |
| Coal Bucket    | Product Link     |                     |



► Note: the above dimensions are based on the standard configuration.

# SEM660D Wheel Loader



## SEM660D

### Product Advantages

- Excellent Fuel Economy
- Best-in-class Reliability and Durability
- High Productivity
- Outstanding Operation Comfort

Caterpillar (Qingzhou) Ltd. Address: No.12999 Nanhuan Road,Caterpillar Industrial Park, Qingzhou City,Shandong Province, Zip Code: 262500 P.R.China

© Materials and specifications are subject to change without notice. Featured machines in photos may include optional equipment. See your SEM dealer for available options.

© 2020 Caterpillar (Qingzhou) Ltd. All Rights Reserved. SEM Machinery, SEM, their respective logos, trade dress as well as corporate and product identity used herein, are trademarks of Caterpillar (Qingzhou) Ltd. and may not be used without permission.

Version: January 2020 - EAEU Region

Website

<http://www.semmachinery.com>



A Caterpillar Brand